

CATALOG 2026-2027

Samco®

Made by RefrigiWear®



SHOP SAMCO WORKWEAR AT
PRO.REFRIGIWEAR.COM/SAMCO

SAMCO

FEATURE ICON KEY ...	4
GARMENTS	5
SIZE CHART	13
FOOTWEAR	14
GLOVES.....	15
HEADWEAR	18
EMBROIDERY	20



When RefrigiWear acquired Samco in 2022, we got to work raising the standard on quality, consistency and durability, while keeping the value-minded pricing workers count on.

Today's Samco gear is built tougher, fits better and works harder, giving crews dependable cold protection backed by decades of RefrigiWear expertise.



Samco[®]

SERIOUS PROTECTION AND GREAT VALUE

Samco delivers all the essential cooler and freezerwear your team needs to stay safe and productive in the cold.

Shop Samco workwear at pro.refrigiwear.com/samco



QUALITY STATEMENT

Since 1954, RefrigiWear® has been committed to Quality, Performance and Reliability. Our founder, Myron Breakstone, demanded a standard of excellence that will never be compromised. We understand that the customer defines quality. To consistently exceed customer expectations, we challenge our dedicated employees and loyal suppliers to continuous improvement of every product, process and service. We promise to aggressively protect the reputation of RefrigiWear® as the industry leader in quality.



THROUGHOUT THIS CATALOG, ICONS ARE USED TO INDICATE DIFFERENT FEATURES AND CLASSIFICATIONS. THE LIST BELOW EXPLAINS WHAT EACH ICON MEANS.



CE
Meets European Safety Standard requirements.



Cold Protection Shield
Tested and certified for compliance to European cold-protective equipment standards.



CSA
Tested and certified CSA safety compliance.



Lightweight
Won't weigh you down while you're working.



Puncture Resistant
Puncture-resistant plate along the sole.



SR Slip Resistance
Tested and certified to meet or exceed ASTM F2413-24 standards for slip resistance on dry and wet surfaces.



Touchscreen
Compatible for use with touchscreen devices.



Water-Repellent
Snow, light rain and condensation rolls off the treated outershell of these products.



Waterproof
These products are 100% waterproof.



Wind-Tight
Outershell keeps the wind out and the warmth in.

SAMCO® INSULATED WORKWEAR BASICS

In the cooler, in the freezer or on the road, Samco delivers a full line of insulated workwear basics. Freezer suits, cooler jackets, bib-pants, thermal sweatshirts, gloves, hats and boots from Samco keep you warm and safe on the job.



ECONO-TUFF® JACKET | PAGE 11



7308R ONE-PIECE FREEZER SUIT

- 220g Polyester fiberfill insulation
- Tear- and abrasion-resistant 420-denier outershell
- Water-repellent
- Front zip with snap-close storm flap
- 2 Front pockets and 1 chest pocket
- Thigh-high leg zippers with snap-close storm flap
- Snaps for optional 6308 Hood
- **SIZE:** S-5XL
- **COLOR:** ■ Navy



8326R FREEZER JACKET

- 220g Polyester fiberfill insulation
- Tear- and abrasion-resistant 420-denier outershell
- Water-repellent
- Front zip with snap-close storm flap
- 2 Front pockets and 1 chest pocket
- Hip-length
- Snaps for optional 6308 Hood
- **SIZE:** S-5XL
- **COLOR:** ■ Navy



6308R SNAP-ON HOOD

- Tear- and abrasion-resistant outershell
- Fleece lining
- Compatible with 8326, 7308 and 8700 jackets
- **SIZE:** One Size
- **COLOR:** ■ Navy



SERIOUS PROTECTION, SERIOUS VALUE

Choosing Samco freezerwear essentials doesn't mean you get less protection or less quality. It means we've removed non-essential features, so your team can stay warm and pay less.

Upper Body Mobility
gives you more freedom to reach and move

Adjustable Fit
delivers comfort that adapts to your body and the way you work

Added Airflow
helps keep you comfortable through active work

Lower Body Insulation
adds warmth where you need it without extra layers up top

WHY CHOOSE BIBS?

Warmth starts at your core. Insulated bib overalls protect your core and lower body, allowing your body to maintain warmth where you need it most. Greater upper-body mobility, added airflow and an adjustable fit provide comfort without compromise.

TWO-TONE HAVIS INSULATED BIB-PANT | PAGE 12
TWO-TONE HAVIS INSULATED QUILTED SWEATSHIRT | PAGE 12
FLEECE GRIP GLOVE | PAGE 17
ENHANCED VISIBILITY WATCH CAP | PAGE 19



7326R
FREEZER BIB-PANT

- 220g Polyester fiberfill insulation
- Tear- and abrasion-resistant 420-denier outershell
- Water-repellent
- Front zip with snap-close storm flap
- Leg zippers with snap-close storm flaps
- 2 Front pockets
- Adjustable elastic straps
- **SIZE:** S-5XL
- **COLOR:** ■ Navy



7400R
SOFTSHELL FREEZER BIB-PANT

PRODUCT RETIREMENT: Order while supplies last.

- 150g Polyester fiberfill insulation
- Water-repellent softshell outershell
- Microfleece lining
- Knee patches
- Above-knee leg zippers
- 2 Hand-warmer pockets
- 1 Inside chest pocket
- Adjustable Y-back elastic straps
- **SIZE:** S-5XL
- **COLOR:** ■ Black





7700R
LIGHTWEIGHT FREEZER BIB-PANT

PRODUCT RETIREMENT: Order while supplies last.

- 150g Polyester fiberfill insulation
- Water-repellent 200-denier outershell
- Above-knee leg zippers
- 2 Front pockets
- Adjustable elastic straps
- **SIZE:** S-5XL
- **COLOR:** Navy



NEW



8004R
RIP-STOP SUBZERO JACKET

- 100g Polyester insulation
- 100% Polyester 100-denier outershell softshell construction
- Water-repellent, wind-tight finish
- 100g Polyester tricot lining
- 2 Hand-warmer pockets
- Full-zip, stand-up collar
- Adjustable cuffs
- Adjustable drawcord at hem to seal out drafts
- **SIZE:** S-5XL
- **COLOR:** Gray



8700R
LIGHTWEIGHT FREEZER JACKET

PRODUCT RETIREMENT: Order while supplies last.

- 150g Polyester fiberfill insulation
- Water-repellent 200-denier outershell
- Front zip with snap-close storm flap
- 2 Front pockets and 1 chest pocket
- Snaps for optional 6308 Hood
- **SIZE:** S-5XL
- **COLOR:** Navy



NEW



7004R

RIP-STOP SUBZERO BIB-PANT

- 100g Polyester insulation
- 100% Polyester 100-denier outershell
- Water-repellent, wind-tight finish
- 100g Polyester tricot lining
- Heel reinforcement patches
- Abrasion-resistant knee patches
- Above-knee leg zippers
- **SIZE:** S-5XL
- **COLOR:** ■ Gray



BUDGET-FRIENDLY FREEZERWEAR ESSENTIALS



RIP-STOP SUBZERO JACKET | PAGE 8
 RIP-STOP SUBZERO BIB-PANT | PAGE 9
 TOUCHSCREEN INSULATED GLOVE | PAGE 15

SAMCO

NEW



7570R
CANVAS BIB-PANT

- 120g Polyester fiberfill insulation
- 99% Cotton / 1% elastane canvas outershell
- Water-repellent
- Quilted polyester lining
- Adjustable elastic straps
- Drawcord with toggle at the waist for adjustable fit
- Hip-length leg zippers with snap closure at hem
- 2 Hand-warmer pockets
- Back pocket
- **SIZE:** S-5XL
- **COLOR:** ■ Charcoal



NEW



7575R
CANVAS COVERALLS

- 120g Polyester fiberfill insulation
- 99% Cotton / 1% elastane canvas outershell
- Water-repellent
- Quilted polyester lining
- Drawcord with toggle at the waist for adjustable fit
- Fleece-lined collar
- Waist-high leg zippers with snap closure at hem
- 2 Hand-warmer pockets
- Back pocket
- **SIZE:** S-5XL
- **COLOR:** ■ Charcoal



NEW



8575R
CANVAS JACKET

- 120g Polyester fiberfill insulation
- 99% Cotton / 1% elastane canvas outershell
- Water-repellent
- Quilted polyester lining
- 2 Hand-warmer pockets
- 1 Inside chest pocket
- Knit cuffs and waistband
- Attached drawstring hood
- **SIZE:** S-5XL
- **COLOR:** ■ Charcoal

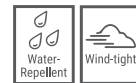


NEW



8554R
WOMEN'S SWEATER JACKET

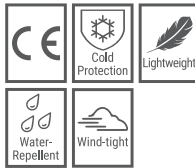
- 390g Triple-layer bonded polyester fleece outershell
- 230g Polyester fleece lining
- Water-repellent, wind-tight finish
- Full-zip front closure
- Zippered chest pocket
- 2 Zippered hand-warmer pockets
- Adjustable cuffs
- Adjustable drawcord at hem to seal out drafts
- Reflective silver piping
- **SIZE:** S-3XL
- **COLOR:** ■ Gray





0925R
ECONO-TUFF® JACKET

- 120g Polyester fiberfill insulation
- Durable 200-denier polyester outershell
- Water-repellent, wind-tight finish
- 2 Outside insulated pockets
- 1 Inside pocket
- Insulated knit collar
- Meets EN 14058:2017 Protective Clothing – Garments for Protection Against Cool Environments: 4 | 2 | 0.182 | X
- **SIZE:** S-5XL
- **COLOR:** Navy



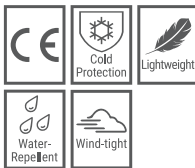
0912R
ECONO-TUFF® VEST

- 120g Polyester fiberfill insulation
- Durable 200-denier polyester outershell
- Water-repellent, wind-tight finish
- 2 Outside insulated pockets
- Insulated knit collar
- **SIZE:** S-5XL
- **COLOR:** Navy



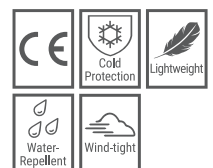
0934R
ECONO-TUFF® FROCK LINER

- 120g Polyester fiberfill insulation
- Durable 200-denier polyester outershell
- Water-repellent, wind-tight finish
- 2 Clipboard-sized front pockets
- Side seam openings for trouser pocket access
- Insulated knit collar
- Snap-front closure
- Fits under frocks or lab coats
- Meets EN 14058:2017 Protective Clothing – Garments for Protection Against Cool Environments: 4 | 2 | 0.179 | X
- **SIZE:** S-5XL
- **COLOR:** Navy



0985R
ECONO-TUFF® BIB OVERALLS

- 120g Polyester fiberfill insulation
- Durable 200-denier polyester outershell
- Water-repellent, wind-tight finish
- 2 Insulated front pockets
- High front and back
- Adjustable 2" heavy-duty suspenders
- Above-knee leg zippers
- Reinforced brass rivets on pockets
- Meets EN 14058:2017 Protective Clothing – Garments for Protection Against Cool Environments: 4 | 2 | 0.193 | X
- **SIZE:** S-5XL
- **COLOR:** Navy





**HARD-WORKING
PERFORMANCE,
GREAT VALUE**



8070R
TWO-TONE HIVIS INSULATED JACKET

- 210g Polyester outershell
- 180g Polyester fiberfill insulation
- Quilted taffeta lining
- Water-repellent finish
- High-visibility lime accent panel at shoulders
- Draft-blocking elastic back band
- Fleece-lined stand-up collar
- 2 Hand-warmer pockets
- 1 Inside pocket
- **SIZE:** S-5XL
- **COLOR:** ■ Black/Lime



7070R
TWO-TONE HIVIS INSULATED BIB-PANT

- 210g Polyester outershell
- 180g Polyester fiberfill insulation
- Quilted taffeta lining
- Water-repellent finish
- High-visibility lime accents
- Above-knee leg zippers
- Reinforced heel patches
- Heavy-duty adjustable elastic straps
- 2 Hand-warmer pockets
- **SIZE:** S-5XL
- **COLOR:** ■ Black/Lime



8470R
TWO-TONE HIVIS INSULATED QUILTED SWEATSHIRT

- 310g Fleece blend outershell
- 170g Polyester fiberfill insulation
- Quilted jersey lining
- High-visibility lime accent panel at shoulders
- Crewneck styling
- 2-Staff pencil pocket on left sleeve
- **SIZE:** S-5XL
- **COLOR:** ■ Black/Lime



8425R
HIVIS FULL-ZIP HOODIE

- 310g Polyester fleece heavy duty hoodie
- High neck with drawstring hood
- 2 Hand-warmer pockets
- 2-Strap pencil pocket on left sleeve
- **SIZE:** S-5XL
- **COLOR:** ■ Lime/Black | ■ Orange/Black



8430R
CREWNECK SWEATSHIRT

- 310g Cotton/polyester fleece blend
- 2-Strap pencil pocket on left sleeve
- **SIZE:** S-3XL
- **COLOR:** ■ Black | ■ Navy | ■ Charcoal

Looking for more apparel and boot options? Shop pro.refrigiwear.com.

Samco®
HOW TO MEASURE FOR YOUR PERFECT SAMCO FIT

MEN'S SIZE CHART				
SIZE	CHEST SIZE INCHES	WAIST SIZE INCHES	INSEAM INCHES	WEIGHT LBS.
XSMALL	30-32	24-26	28.5	90-115
SMALL	34-36	28-30	29	120-140
MEDIUM	38-40	32-34	29.5	145-165
LARGE	42-44	36-38	30	170-190
XLARGE	46-48	40-42	30.5	195-215
2XLARGE	50-52	44-46	31	220-245
3XLARGE	54-56	48-50	31.5	250-280
4XLARGE	58-60	52-54	32	285-320
5XLARGE	62-64	56-58	32.5	OVER 325

SAMCO® FOOTWEAR

When you need to feel sure of every step, you need footwear that goes the distance for you. Work boots from Samco keep you comfortable so you can keep moving all day long.



CONTOURED HIKER BOOT | PAGE 14

NEW



1200S PROCESSING BOOT

- Waterproof safety boot ideal for food processing applications
- ASTM F2413-24 I/C SR rated steel toe
- Protects from impact and compression of the toe area
- Slip resistant for general wear environments in wet and dry conditions
- CSA puncture-resistant plate
- PVC construction with comfort insole
- 16" Pull-on style upper
- **SIZE:** Full 7-14



1221P PLAIN TOE PAC BOOT

PRODUCT RETIREMENT: Order while supplies last

- 200g Insulation in boot, plus insulated removeable liner
- 12" Suede leather upper
- Pac boot styling with TPR shell
- Waterproof
- **SIZE:** Full 7-14



NEW



1410S CONTOURED HIKER BOOT

- 200g Insulation
- ASTM F2413-24 I/C EH SR rated steel toe
- Protects from impact and compression of the toe area
- Protects against accidental stepping on live electric wires
- Slip resistant for general wear environments in wet and dry conditions
- Nylon upper
- Rubber toe guard
- **SIZE:** Full 7-14, Half 8½-11½



InduraSafe® Slip Resistance Wet 4 Dry 4

INDURASAFE® SLIP RESISTANCE

Slip-resistant outsoles reduce the risk of slipping accidents. InduraSafe® ratings indicate the outsole slip resistance in dry or wet conditions on a scale from 1 to 5, where 5 is the highest level of slip resistance. InduraSafe® ratings are based on results from ASTM F2913-24 Evaluation of Slip Resistance Using a Whole Shoe Tester.

InduraSafe® Slip Resistance Wet 5 Dry 5

SAMCO® THERMAL WORK GLOVES

When the team is counting on you to carry the day, you need work gloves that help you carry the load. Whether you prefer traditional leather gloves or a little extra grip, Samco thermal work gloves help you get the job done.



FLEECE GRIP GLOVE | PAGE 17



2126R SPLIT COWHIDE FREEZER

- 200g Fiberfill plus foam insulation
- Thick split suede leather
- Reinforced palm
- Microfleece lining
- Extended knit wrist
- **SIZE:** S, M, L, XL



NEW



Pre-curved, ergonomic fit

2747R TOUCHSCREEN INSULATED

- 150g Fiberfill plus foam insulation with tricot lining
- Nylon outershell with faux leather palm
- Padded palm
- Adjustable wrist
- Touchscreen capability on thumb, index, and middle fingers
- Pre-curved, ergonomic fit
- **SIZE:** M, L, XL



2123R SPLIT COWHIDE

- 150g Fiberfill plus foam insulation
- Heavy-duty reverse suede leather
- Reinforced palm
- Fleece lining
- Extended knit wrist
- **SIZE:** M, L, XL



2495R COWHIDE FREEZER MITT

- 100g Fiberfill and foam insulation
- Cowhide suede leather
- Fleece lining
- Reinforced palm
- Extended knit cuffs
- **SIZE:** S, M, L, XL





2338R
HIVIS WATERPROOF

- Fleece and fiberfill insulation
- Synthetic leather, nylon and spandex construction
- Fleece lining
- Anti-slip PVC patches on palm and fingers
- Adjustable cuff
- Waterproof
- **SIZE:** S, M, L, XL, 2XL



2200R
GOATSKIN FREEZER

- 100g Fiberfill plus foam insulation
- Heavy-duty reverse grain leather
- Reinforced thumb crotch
- Microfleece lining
- Extended knit wrist
- **SIZE:** S, M, L, XL



NEW



2535R
INSULATED SOFTSHELL GRIP

- 150g Polyester fiberfill and foam insulation
- Polyester, nylon and synthetic leather construction
- Silicone grip on palm
- Touchscreen capability on index, thumb and middle fingers
- **SIZE:** M, L, XL



2172R
LEATHER AND CANVAS

- 100g Fiberfill plus foam insulation
- Leather and canvas construction
- Microfleece lining
- Knit wrist
- **SIZE:** S, M, L, XL

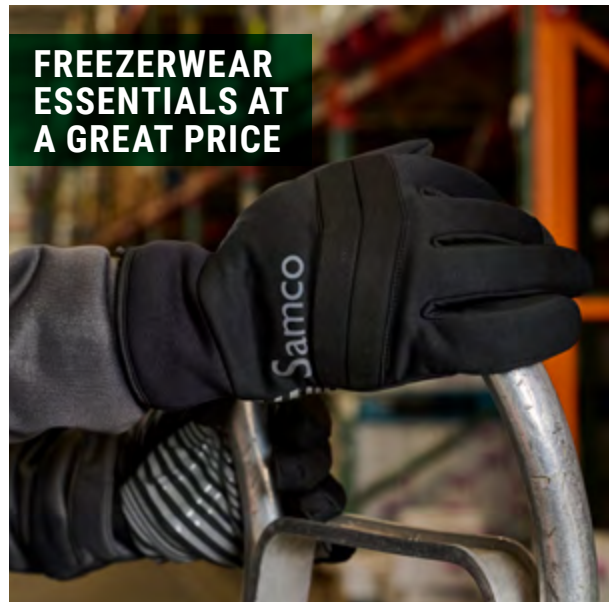


2310R
THERMAL ERGO

- 100g Fiberfill and foam insulation
- Spandex, neoprene and deerskin leather construction
- Tricot lining
- Adjustable cuff
- **SIZE:** M, L, XL, 2XL



**FREEZERWEAR
ESSENTIALS AT
A GREAT PRICE**





2315R
WATERPROOF HIGH DEXTERITY
INSULATED

- 100g Fiberfill and foam insulation
- Spandex with synthetic leather palm
- Microfleece lining
- Anti-slip patches on palm and fingers
- Adjustable cuff
- Waterproof
- **SIZE:** M, L, XL



2146R
FLEECE & LEATHER

- 100g Fiberfill insulation
- Fleece and deerskin leather construction
- Tricot lining
- **SIZE:** M, L, XL



2290R
FLEECE GRIP

- 70g Insulation
- Fleece and synthetic leather construction
- Fleece lining
- Silicone grip pattern on palm
- **SIZE:** M, L, XL



2517R
FLEECE CONVERTIBLE MITT

- 100g Fiberfill insulation
- Fleece fingerless glove with hood
- Fleece lining
- Polyester palm patch
- **SIZE:** XS, S, M, L, XL, 2XL



Icon reference for Prop 65 warning:

WARNING: This product may contain chemicals known to the state of California to cause cancer, birth defects, or other reproductive harm.

Looking for more gloves,
 mitts and liners? Shop
pro.refrigiwear.com.



SAMCO® THERMAL HEADWEAR

Go head-to-head with the cold with complete warmth, safety and protection from Samco thermal headwear. Keep the chill off your head, ears, face and neck with insulated masks, caps, gaiters and hoods.



ENHANCED VISIBILITY WATCH CAP | PAGE 19



6902R
FLEECE-LINED FACE MASK

- Acrylic knit
- Fleece lined
- **SIZE:** One Size
- **COLOR:** ■ Navy



6898R
DOUBLE-LAYER KNIT FACE MASK

- Double-layer acrylic knit
- Extended neck
- **SIZE:** One Size
- **COLOR:** ■ Navy | ■ Lime | ■ Orange



6906R
FLEECE NECK GAITER

- Polyester fleece
- Traps heat around neck
- **SIZE:** One Size
- **COLOR:** ■ Black



6907R
DOUBLE-LAYER NECK GAITER

- Double-layer acrylic knit
- Traps heat around neck
- **SIZE:** One Size
- **COLOR:** ■ Black | ■ Lime



6883R
KNIT HEADBAND

- Double-layer acrylic knit
- Fiberfill insulation
- Wide folding band
- **SIZE:** One Size
- **COLOR:** ■ Black



6894R
KNIT WATCH CAP

- Double-layer acrylic knit
- Wide folding band
- **SIZE:** One Size
- **COLOR:** ■ Black | ■ Navy | ■ Lime | ■ Orange



6222R
ENHANCED VISIBILITY WATCH CAP

- Double-layer acrylic knit
- Wide high-visibility folding band
- **SIZE:** One Size
- **COLOR:** ■ Lime/Black



6888R
INSULATED KNIT WATCH CAP

- Double-layer acrylic knit
- Fiberfill insulation
- Wide folding band
- **SIZE:** One Size
- **COLOR:** ■ Black



6885R
HIVIS KNIT CAP

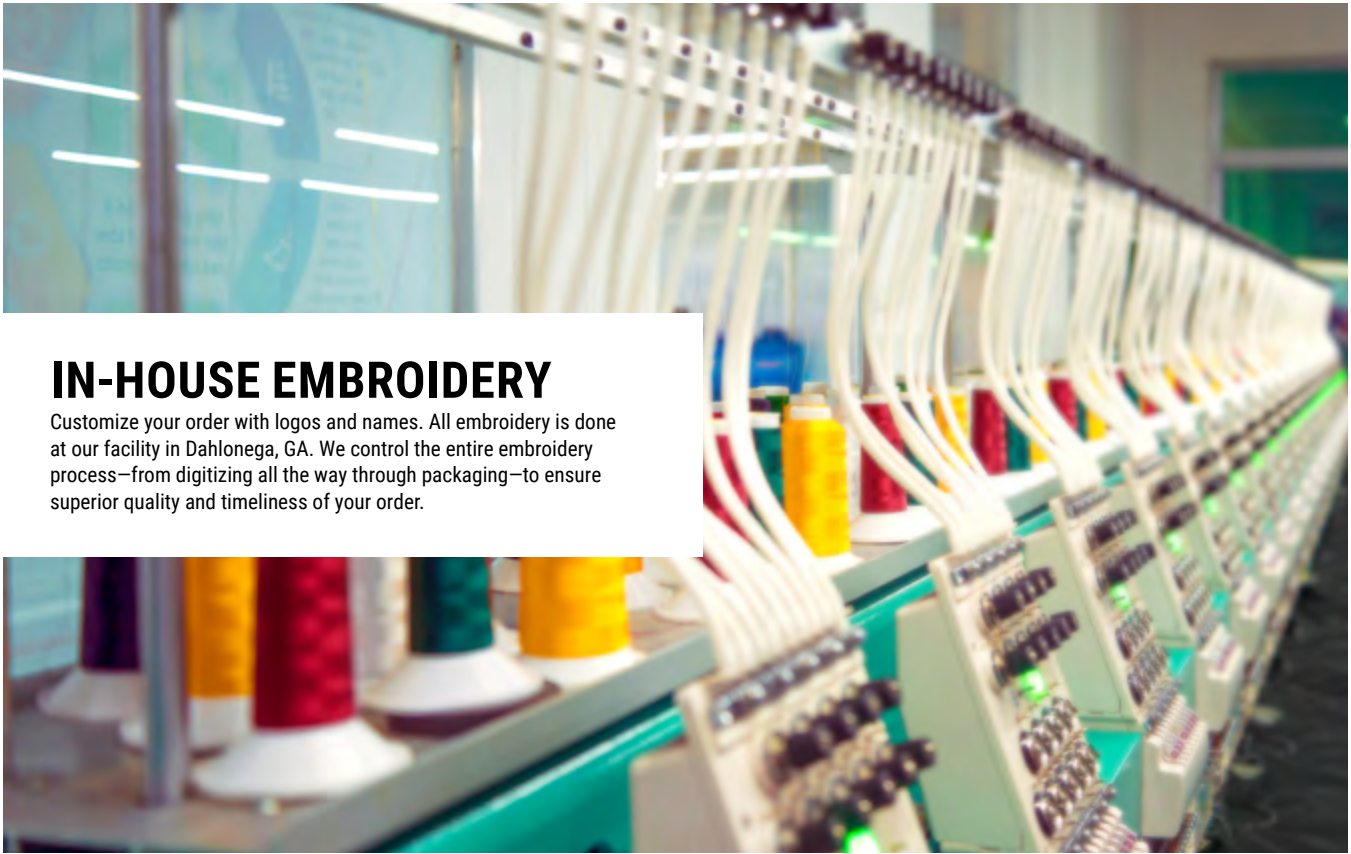
- Double-layer acrylic knit
- Wide folding band
- **SIZE:** One Size
- **COLOR:** ■ Lime



6308R
SNAP-ON HOOD

- Tear- and abrasion-resistant outershell
- Fleece lining
- Compatible with 8326, 7308 and 8700 jackets
- **SIZE:** One Size
- **COLOR:** ■ Navy





IN-HOUSE EMBROIDERY

Customize your order with logos and names. All embroidery is done at our facility in Dahlonega, GA. We control the entire embroidery process—from digitizing all the way through packaging—to ensure superior quality and timeliness of your order.



DIRECT EMBROIDERY

- COMPANY LOGOS
- JOB TITLES
- NAMES
- NUMBERS
- SPECIAL EVENTS
- AWARDS

Direct embroidery provides a premium appearance and the most professional look. This is our most requested option. With Pantone® color matching, there are thousands of colors to choose so your embroidery will match your logo and brand exactly.

Direct embroidery remains intact for the life of the garment, and threads are color-fast for a significant length of time with typical wash and wear.

Visit pro.refrigiwear.com/embroidery to learn more.



PERSONALIZE YOUR WORKWEAR

It's easier than ever to customize gear for your business on the pro.refrigiwear.com.

Personalize your garments, headwear and select accessories with your company logo, employee names or other embellishments using the online personalization tool.



1



SELECT THE ITEM, SIZE & COLOR

Log into your business account on pro.refrigiwear.com and select the item you want to personalize.

Select your size and color, then click **PERSONALIZE**.

2

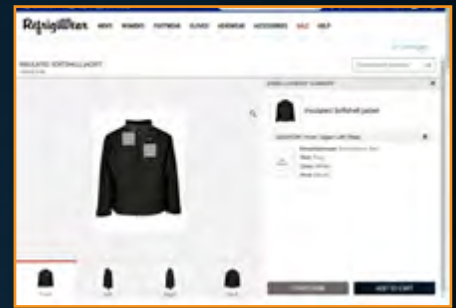


SELECT PERSONALIZATION OPTIONS

All options for the item you selected are listed in the personalization window.

To add a logo, click the box where you want it to appear on the item and select your logo. To add a name or other text, click on a text option and then type the name or text, adjusting font styles, colors and sizes to your preference.

3



VIEW SUMMARY & ADD TO CART

After adding a personalization, you'll see a summary. If you want to add something else, select the next area you'd like to personalize.

Review the summary to make sure the item is personalized exactly as you want it. Once a personalized item is added to your cart, it can be removed, but it can't be edited.

PRO TIP

When ordering for a team, you can quickly add embroidered names to multiple items of the same size and color. Select the quantity you need and click **PERSONALIZE**. In the personalization window, select the **LIST OPTION** and download the spreadsheet template. Fill in the columns, then save and upload your completed file. Review your personalization options for accuracy, then proceed with step 3.

When you're finished reviewing your personalization options, click **ADD TO CART**. Then, add and personalize other items or proceed to checkout.

Watch a video demonstration at pro.refrigiwear.com/embroidery





EMBROIDERY ADDS A PROFESSIONAL LOOK

With our embroidery, screen printing, patch and woven emblem technology, you can add logos, names and numbers to multiple locations on almost every RefrigiWear® garment.

HEAT TRANSFERS

Heat transfers impact only the exterior of the garment and allows you to use intricate, picture-quality images.

- LOW-COST ALTERNATIVE TO EMBROIDERY
- GREAT FOR LARGE GRAPHICS ON BACK OF GARMENTS
- MUST BE A MINIMUM ORDER OF 50 UNITS
- ALLOW 7-10 DAYS FOR PRODUCTION



WOVEN EMBLEM

Woven designs give you greater flexibility on a patch that is sewn onto the garment. It also makes replacement easy. Woven Label Emblems are manufactured using high-speed automatic weaving looms. Unlike embroidered emblems which are produced on twill materials, the interlaced weaving process creates the entire emblem and design at the same time, in two or more colors.



Visit pro.refrigiwear.com/embroidery to learn more.



RefrigiWear®

ORDER ONLINE

ORDER ANYTIME

The website is open 24/7/365 so you can order what you need, when you need it.

IN-DEPTH INFO

Get more info on features, watch videos, and see the ways we help employees keep working.

PRICING

Log in to your business account to see your pricing for every product.

REQUEST YOUR LOGIN TODAY!

VISIT PRO.REFRIGIWEAR.COM/SAMCO

Samco®

Made by RefrigiWear®

54 Breakstone Drive
Dahlonega, GA 30533

FRIENDLY BILINGUAL* CUSTOMER SERVICE

Real, live customer service from Dahlonega, Georgia. Call toll free, 800.645.3744, chat at pro.refrigiwear.com or email keepmewarm@refrigiwear.com.

Live customer support (all Eastern time):

Monday – Friday | 7:00a.m. to 6:00p.m. Year round.

*Nosotros hablamos español.

WARRANTY

Your total satisfaction with your purchase is important to us.

Warranty information is available online at pro.refrigiwear.com/warranty or by calling our Customer Service Team at 800.645.3744.

INTERNATIONAL CUSTOMERS

Visit pro.refrigiwear.com/international or call 706.864.5757 to be connected with an authorized Sales Representative or Distributor in your country.

54 Breakstone Drive
Dahlonega, GA 30533
keepmewarm@refrigiwear.com
Phone: 800.645.3744
Fax: 800.377.0520 • 706.864.5898

©2026 RefrigiWear®, LLC The REFRIGIWEAR® and Samco name and logos and all related product and service names, design marks and slogans are the trademarks or service marks of RefrigiWear®. All other marks are the property of their respective owners.

